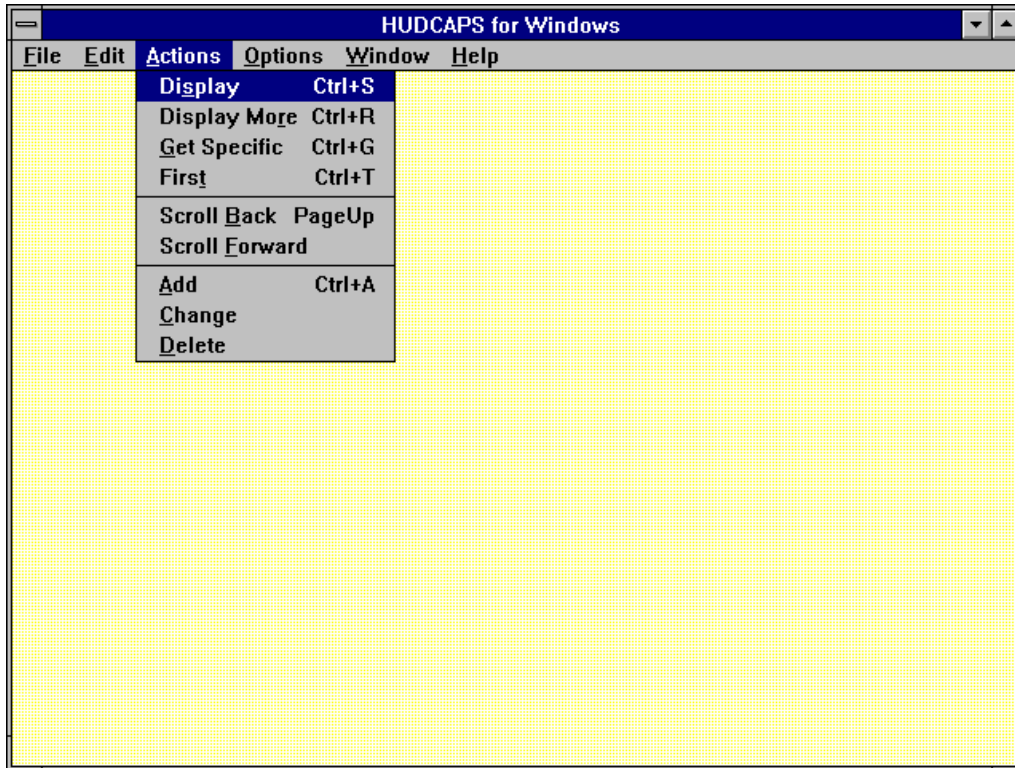


## Section 12 Actions Menu



Menu Selection	Keyboard	Description
Display	Ctrl + S	Scans the HUDCAPS tables and displays all entries that match the specified key fields
Display More	Ctrl + R	Displays the next screen of entries (if applicable)
Get Specific	Ctrl + G	Scans the HUDCAPS tables and displays matching entry based on the specified key fields. Get Specific requires that all key fields be entered
First	Ctrl + T	Displays the first entry in the active table
Scroll Back	Page Up	Shows the previously displayed entries
Scroll Forward	—	Moves forward through the displayed entries
Add	Ctrl + A	Adds new records as entered on tables by the user into the system
Change	—	Changes records already in the system
Delete	—	Deletes records from the system