



The **Community Builders**, Inc.



Presentation to

Choice Neighborhoods Annual Conference: Transforming Schools & Community

A Collaborative Journey

June 19, 2014



CPS
community
learning centers®



CPS
community
learning centers

Cincinnati Public Schools

COMMUNITY LEARNING CENTERS

- ❖ Community Learning Centers are “hubs” for a variety of services and resources for students and their families.

- ❖ Through co-located community partnerships, CLC schools provide:
 - ❖ **Tutoring**
 - ❖ **College Access**
 - ❖ **After School Programs**
 - ❖ **Mentoring**
 - ❖ **Youth Leadership**
 - ❖ **Health & Wellness**
 - ❖ **Family Engagement**
 - ❖ **Social Wellness**
 - ❖ **Basic Needs**
 - ❖ **Classroom Enrichment**
 - ❖ **Extracurricular Activities**

- ❖ CLC schools work to integrate school-day and extended day learning



Cincinnati Public Schools

COMMUNITY LEARNING CENTERS

THE MODEL:

Board Policy & Facility Master Plan (2002)

Site-based Governance – Local School-
Decision Making

Community Engagement/Shared Vision

REFORM

Scale Up



Extracurricular

Tutoring

Family Engagement

College Access

After School

Classroom

Enrichment

Social Wellness

Learning

Leadership

Basic Needs

Health and Wellness



CPS Parameters for Partnership

- Partnerships with the school will support the mission of CPS to educate all students to meet or exceed the district's defined academic standards.
- District dollars must be devoted to education.
- Partnerships co-located in the school must be financially self-sustaining.
- Partnerships co-located in the school will be integrated into the school's operation and governance by working with the LSDMC toward the mission and goals of the school's OnePlan.
- Partnerships must have measurable outcomes related to the mission of CPS and the school's OnePlan, which will be monitored by the LSDMC. If the partnership is not demonstrating a positive impact, the LSDMC and Principal have the authority to discontinue the partnership subject to controlling legal agreements. Relationships with Capital partners must be negotiated with the administration.
- Services and programs offered by partnerships must be accessible and affordable to students, parents and the school community.

DATA COLLECTION & ANALYSIS



Cincinnati **Learning Partner**
Dashboard



HOME PARTNERS STUDENTS REPORTS SUPPORT ADMINISTRATION

You are here: Home

Sample Class Profile

Welcome to the Cincinnati Learning Partner Dashboard! This information on students to ensure that the students have school.

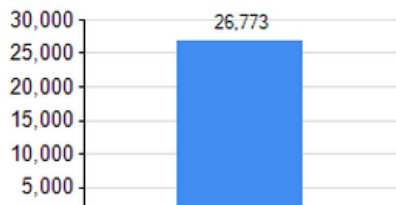
Learning partners have the ability to upload student-level benefit to the partners is that they can help support student programs. In return, schools get access to data collected various in school and out of school activities and services.

Schools and partners are able to better communicate and maximum impact on student academic success.

To view a demonstration video of this system, [click here](#).

Dashboard Summary

Number of Students Served By All Partners



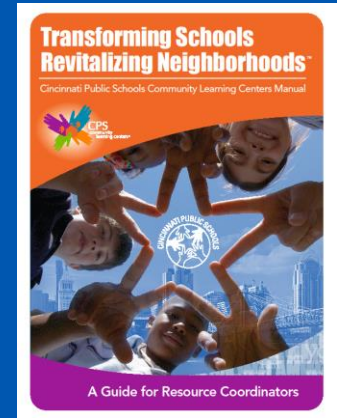
Percentage



School Name	Grade	Student Name	Student ID	Targeted Service Referral	Disability	LEP	Gifted	Absences	Tardies	Referrals	Reading Performance Level	Math Performance Level	Priority Indicators	Tutoring	Mentoring	College Access	After School
Total School X	04	Mike	505			Y		7	1	7	Proficient	Proficient	2	CPS Student Services Intervention Program (SSIP)	Cincinnati Youth Collaboration		Cincinnati After School
		Herry				Y		1	4	0	Advanced	Proficient	0				
		Nikiah				N		2	2	0	Accelerated	Advanced	0				
		Aslan				L		4	5	0			1				
		Aja		Y	Y	N		5	1	0	Basic	Basic	3	Community Volunteer, CPS Student Services Intervention Program (SSIP)			Cincinnati After School
		Billy		Y		Y		5	0	0	Basic	Proficient	2	Community Volunteer, CPS Student Services Intervention Program (SSIP)			
		Isaiah				N		11	2	0	Accelerated	Accelerated	1				Cincinnati After School
		Christopher		Y		N		5	5	7	Proficient	Proficient	2	Community Volunteer			
		Brook		Y		N		4	5	0	Limited	Proficient	2	Community Volunteer			
		Lauren		Y		N		1	1	0	Basic	Accelerated	2	Community Volunteer			
		Carter				N		1	7	2	Proficient	Proficient	1				
		Samantha		Y		N		14	11	0	Basic	Basic	4	Community Volunteer, Supplemental Education Services NCLB (SES)			
		John		Y		N		1	1	0	Basic	Basic	2	Community Volunteer			Cincinnati After School
		Kemba			Y	Y		21	1	0			1	Supplemental Education Services NCLB (SES)			
		Clay		Y		N		21	5	1	Basic	Proficient	3				
		Robert				Y		0	0	0			0				
		Rikki				Y		4	1	0		Basic	1	CPS Student Services Intervention Program (SSIP)			Cincinnati After School
		Amber				Y		4	0	0			0	Supplemental Education Services NCLB (SES)			Cincinnati After School
		Ada				Y		5	1	5	Accelerated	Advanced	2				
		Aisha				N		0	1	0	Advanced	Accelerated	0				Cincinnati After School
		Chana		Y		N		5	18	0	Limited	Proficient	3	Community Volunteer			
		Jordan				N		11	5	2	Accelerated	Accelerated	2				Cincinnati Youth Collaboration
		Mariana				Y		0	1	0	Accelerated	Proficient	1				
		Andrew				N		0	1	0			0				
		Darius				N		5	1	0	Accelerated	Accelerated	0				
		Donnell		Y	Y	N		1	5	1	Accelerated	Proficient	0	CPS Student Services Intervention Program (SSIP), Supplemental Education Services NCLB (SES)			
		Ivin				N		0	0	0	Accelerated	Advanced	0				Cincinnati After School
		Antonio		Y		N		6	5	0	Basic	Proficient	3				Cincinnati After School

Cincinnati Public Schools

COMMUNITY LEARNING CENTERS



Scaling Up and Sustaining the Model

- Blending funding sources to expand # of CLCs (SIG, Title I, grants) – 39 of 55 this year
- Codifying process across schools - manual for Resource Coordination
- Cross training – sharing Resources
- Analyzing partner data with school data – sharing accountability
- “Collective impact” evident – when students, families and communities are connected in meaningful ways, academic achievement increases

TARGETING, ALIGNING AND USING DATA FOR IMPACT

School Ratings and Effectiveness

Schools	2007-2008	2011-2012	Change
Improvement or Higher	30.9%	69.7%	+38.9

Overall school ratings and effectiveness in CLC schools have improved since the onset of resource coordination in 2007-2008. Academic tutoring, mentoring and other services provided by community partners and parent engagement have been associated with positive school performance trends.

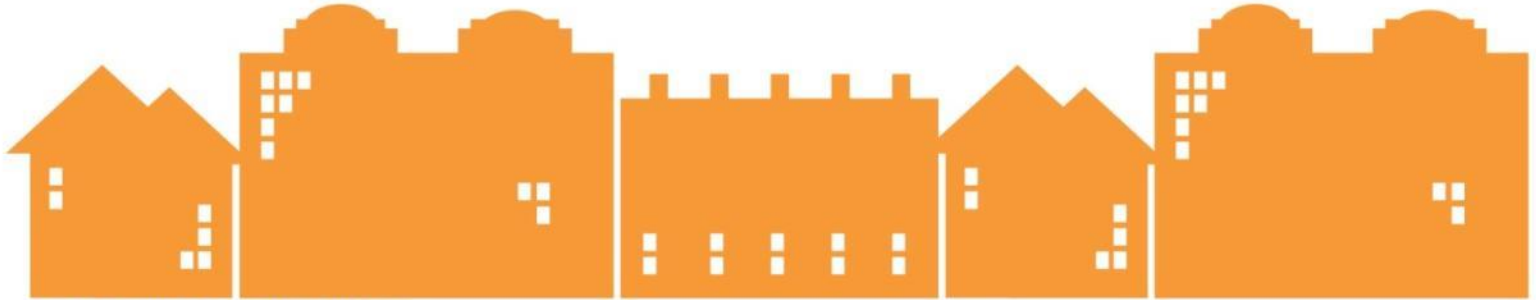
Shared Vision: Avondale Choice Neighborhood



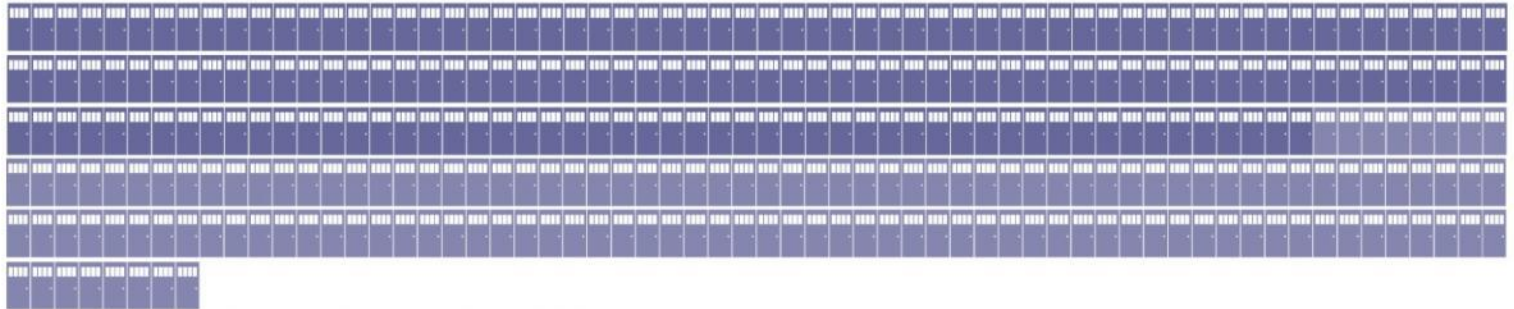
**\$29.5
MILLION**

**CHOICE
GRANT**

**AVONDALE
CINCINNATI, OHIO**



5 REHABILITATED BUILDINGS



318 APARTMENTS (140 PRESERVED UNITS)



483 RESIDENTS (318 CHILDREN)

By Nicole Brewer, The Community Builders, Inc.

Shared Vision: **Housing**

CHOOSE HOUSING
THAT OFFERS MORE THAN A HOME



Avondale Choice will spend more than **\$60 million** to improve or build **318 apartments.**

CHOOSE AVONDALE

- Rehab 5 buildings
- Renovate 4 blighted, vacant buildings
- Develop parcels in strategic locations
- Choice housing funds leveraged 4:1

Total: 318 new/rehabbed housing units

Shared Vision: People

CHOOSE EDUCATION
THAT PROMOTES FAMILY SUPPORT



Kids with parents who help at school are **50% less likely** to get in trouble at schools with **Community Learning Centers.**

Source: Cincinnati Public Schools, Community Learning Centers, Year in Review 2010-11

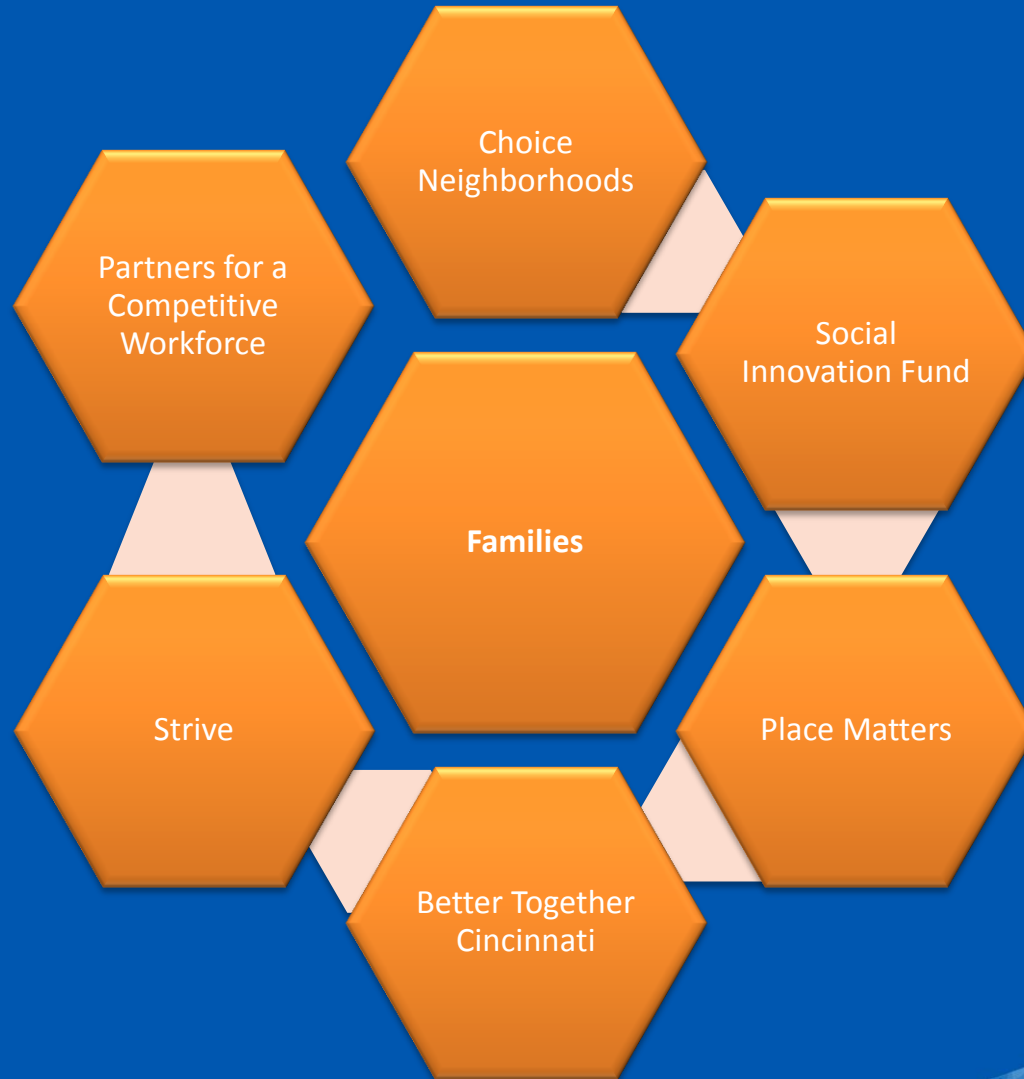
CHOOSE AVONDALE

- Expansion of healthy living programs
- Financial literacy programming
- Connect with jobs
- Expanded Arts & Culture Programming
- People Partners:
 - Urban League of Greater Cincinnati
 - Cincinnati Public Schools
 - The Center for Closing the Health Gap
 - Innovations - Children's Hospital

CHOICE – THE OPPORTUNITY

- Early Learning Community Resource Coordinator
 - Focus on 0 – 4 year olds
 - Develop quality and capacity of Child Care Providers
- Arts Integration Specialist
 - Curriculum Development
 - Train the Trainer for Social Service Providers
 - Professional Development for Teachers
 - Arts & Culture Beyond the Classroom...into the Community

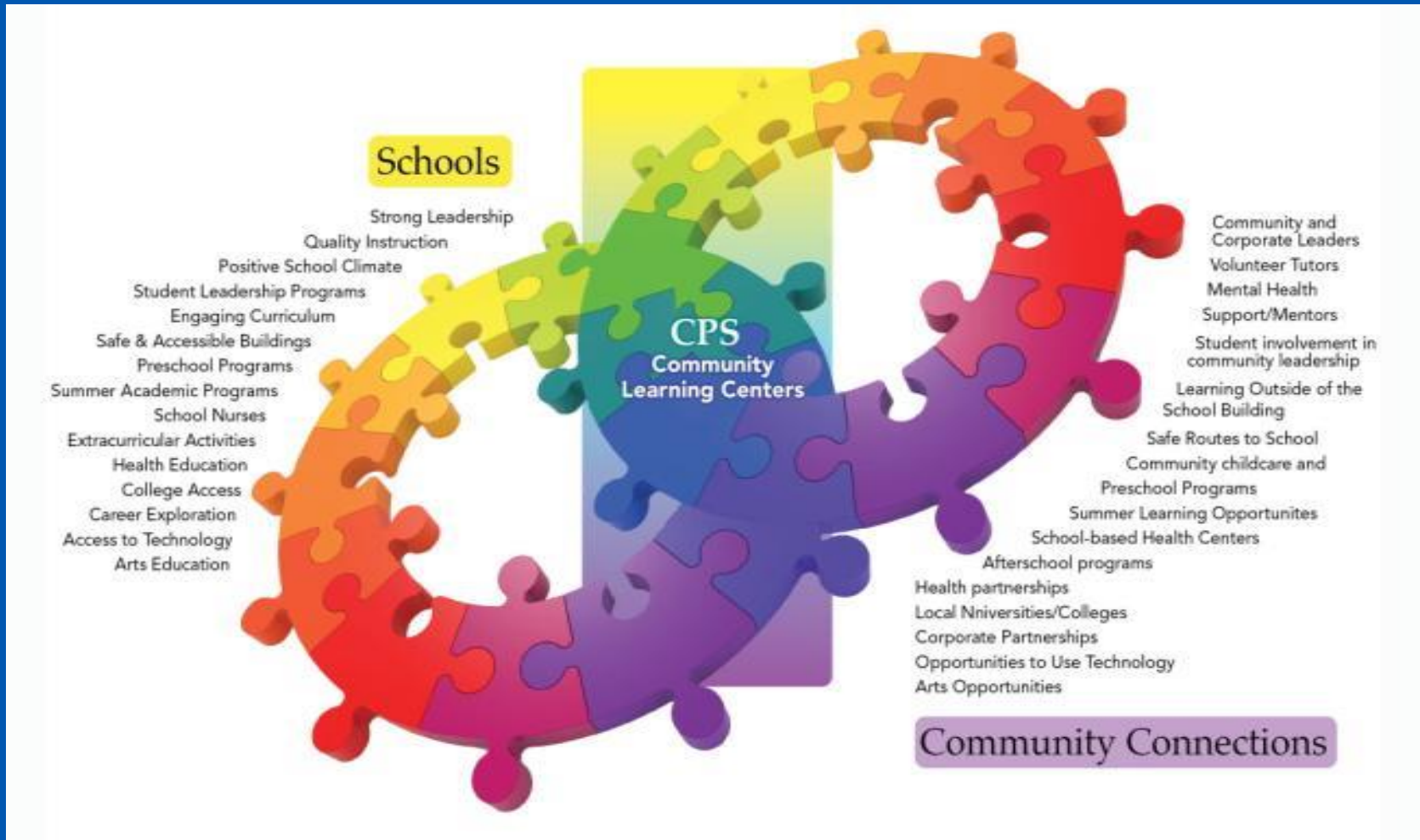
LEVERAGING PARTNERSHIPS



A Collective Commitment...



Schools and the communities they serve are inextricably linked. One rarely succeeds without the success of the other.





The **Community Builders**, *Inc.*



THANK YOU!

Julie Doppler ,Cincinnati Public Schools
&
Cinnamon Pelly, The Community Builder's, Inc.

June 19, 2014