



# FHA Commercial Mortgage Portfolio

July 2024



Office of Risk Management and Regulatory Affairs, Office of  
Evaluation, Reporting & Analysis Division

## Table of Contents

Table 1. FHA Multifamily Apartments Insured Portfolio, Transitions within Portfolio.....	3
Table 2. FHA Multifamily Apartments Pipeline Summary .....	5
Table 3. FHA Multifamily Apartments 60+ Day Default Rate.....	8
Table 4. FHA Residential Care Facilities Insured Portfolio, Transitions within Portfolio.....	10
Table 5. FHA Residential Care Facilities Pipeline Summary.....	12
Table 6. FHA Residential Care Facilities 60+ Day Default Rate .....	13
Table 7. FHA Hospital Facilities Insured Portfolio, Transitions within Portfolio .....	15
Table 8. FHA Hospital Facilities Pipeline Summary.....	17
Table 9. FHA Hospital Facilities 60+ Day Default Rate .....	18

## Table of Figures

Figure 1: FHA Multifamily Apartments Insurance-in-Force and Count, Last 2 Years.....	4
Figure 2: FHA Multifamily Apartments Endorsement UPB and Count for All Risk Categories for Last 2 Years .....	7
Figure 3: FHA Multifamily Apartments Endorsement Amount by Risk Category for Last 2 Years .....	7
Figure 4: FHA Multifamily Apartments Default UPB and Count for Last 2 Years.....	9
Figure 5: FHA Residential Care Facilities Insurance-in-Force and Count, Last 2 Years.....	11
Figure 6: FHA Residential Care Facilities Default UPB and Count for Last 2 Years.....	14
Figure 7: FHA Hospital Facilities Insurance-in-Force and Count, Last 2 Years .....	16
Figure 8: FHA Hospital Facilities Default UPB and Count for Last 2 Years .....	19

<b>Insured Portfolio</b>	<b>Number of Loans</b>	<b>Loan Balance (\$ millions)</b>
Insurance In-Force (Beginning)	11,202	126,238.6
Terminations	(14)	(60.3)
Claims	(1)	(29.2)
Regular Claim	(1)	(29.2)
Market to Market	0	0.0
Partial Payment Claim	0	0.0
Maturity	(1)	0.0
Prepayment	(10)	(26.0)
Refinanced with FHA Loans	(2)	(5.0)
New Endorsements	37	715.2
New Business	21	453.0
221(d)(3) <sup>a</sup>	0	0.0
221(d)(4) <sup>b</sup>	11	362.3
223(a)(7) <sup>c</sup>	0	0.0
241(a) <sup>e</sup>	1	15.5
542(b) New Construction <sup>f</sup>	0	0.0
542(c) New Construction <sup>g</sup>	9	75.3
223(d) <sup>h</sup>	0	0.0
Other Rental <sup>i</sup>	0	0.0
Refinance	16	262.2
223(a)(7) <sup>c</sup>	0	0.0
223(f) <sup>d</sup>	15	261.5
241(a) <sup>e</sup>	0	0.0
542(b) Refinance <sup>f</sup>	0	0.0
542(c) Refinance <sup>g</sup>	1	0.7
223(d) <sup>h</sup>	0	0.0
Amortization / Principal Reduction	na	(187.8)
Insurance In-Force (Ending)	11,225	126,705.7
<b>Defaults</b>		.
60+ Days Defaults (Beginning)	22	290.3
No longer in Defaults	(6)	(86.5)
Reinstated	(2)	(4.3)
Default to Delinquent	(3)	(53.0)
Terminated Defaults	(1)	(29.2)
Continuing Defaults	16	203.8
New 60+ Defaults	3	52.3
Amortization / Principal Reduction	na	(0.1)
60+ Days Defaults (Ending)	19	255.9

FHA Commercial Mortgage Portfolio

na = not applicable.

NOTE: Data are for July 1, 2024 – August 1, 2024

<sup>a</sup> Section 221(d)(3): Insures mortgage loans in order to facilitate the new construction or rehabilitation of multi-family rental, cooperative housing, or single-room occupancy facilities (SROs) for moderate-income households, the elderly, and people with disabilities for up to 100 percent of replacement costs for public, nonprofit, and cooperative mortgagors.

<sup>b</sup> Section 221(d)(4): Insures mortgage loans in order to facilitate the new construction or rehabilitation of multi-family rental, cooperative housing, or single-room occupancy facilities (SROs) for moderate-income households, the elderly, and people with disabilities for up to 90 percent of replacement costs irrespective of the type of mortgagor.

<sup>c</sup> Section 223(a)(7): Permits refinancing of an existing loan to reduce interest rate and/or extend amortization period in order to reduce risk of default.

<sup>d</sup> Section 223(f): Insures mortgage loans to facilitate the purchase or refinancing of existing multifamily rental housing.

<sup>e</sup> Section 241: Insures mortgage loans to finance repairs, additions, and improvements to multifamily rental housing with FHA-insured first mortgages or HUD-held mortgages.

<sup>f</sup> Section 542(b): Authorizes HUD to enter into reinsurance agreements with Fannie Mae, Freddie Mac, qualified financial institutions (QFIs), and the Federal Housing Finance Board.

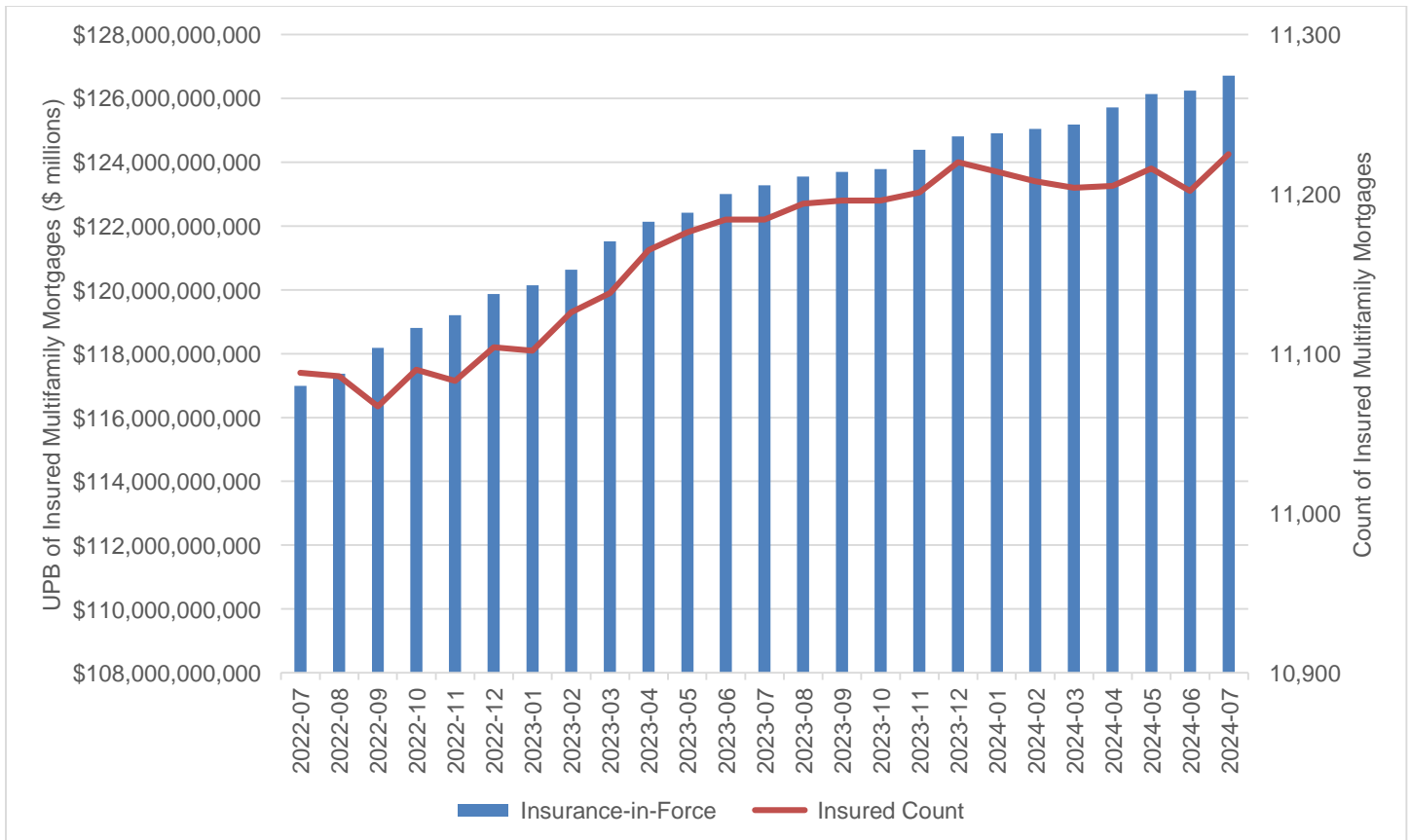
<sup>g</sup> Section 542(c): Enables HUD to carry out a program in conjunction with qualified state and local housing finance agencies (HFAs) to provide federal credit enhancement for loans for affordable multifamily housing through a system of risk-sharing agreements.

<sup>h</sup> Section 223(d): Insures two-year operating loss loans that cover operating losses during the first 2 years after completion (or any other 2-year period within the first 10 years after completion) of multifamily projects with a HUD-insured first mortgage.

<sup>i</sup> Other Rental: Mortgage loan insurance for Mobile Home Courts (Section 207), Management Cooperative (Section 213), Consumer Cooperative (Section 213(i)), Urban Renewal Housing (Section 220), and Elderly Housing (Section 231).

SOURCE: U.S. Department of HUD/FHA, August 2024.

**Figure 1: FHA Multifamily Apartments Insurance-in-Force and Count, Last 2 Years**



Unpaid Principal Balance (UPB) is the current outstanding principal balance due on the mortgage.

SOURCE: U.S. Department of HUD/FHA, August 2024

**Table 2. FHA Multifamily Apartments Pipeline Summary**

	July 2024			July 2023			FY 2024 to-date			FY 2023 to-date			FY 2023 Final	
	Number Of Loans	Loan Balance (\$) In Million	Loan Balance (\$)	Number Of Loans	Loan Balance (\$) In Million	Loan Balance (\$)	Number Of Loans	Loan Balance (\$) In Million	Loan Balance (\$)	Number Of Loans	Loan Balance (\$) In Million	Loan Balance (\$)	Number Of Loans	Loan Balance (\$)
Applications	61	1,910.7	1,937.9	72	1,583.1	15,806.7	656	15,806.7	764	18,849.9				
221(d)(3) <sup>a</sup> , 223(d) <sup>b</sup> , 241(a) <sup>c</sup>	2	41.1	18.9	1	149.5	54.7	4	54.7	6	117.3				
221(d)(4) <sup>d</sup>	27	1,005.1	1,164.3	28	1,593.5	8,198.4	245	8,198.4	292	10,154.4				
223(a)(7) <sup>e</sup>	0	0.0	0.0	0	0.0	0.0	0	0.0	0	0.0				
223(f) <sup>f</sup>	27	575.6	512.7	32	512.7	6,296.1	317	6,296.1	362	7,138.3				
542 Risk Share <sup>gh</sup>	4	47.7	148.5	7	148.5	917.2	79	917.2	92	1,072.8				
Other Rental <sup>i</sup>	1	241.1	93.4	4	93.4	340.4	11	340.4	12	367.2				
Commitments	47	944.0	863.6	39	863.6	7,209.4	508	10,215.7	612	12,251.4				
221(d)(3) <sup>a</sup> , 223(d) <sup>b</sup> , 241(a) <sup>c</sup>	0	0.0	0.0	0	0.0	40.6	6	40.6	9	77.5				
221(d)(4) <sup>d</sup>	17	509.6	509.5	16	509.5	3,550.6	135	3,550.6	175	4,439.9				
223(a)(7) <sup>e</sup>	0	0.0	0.0	0	0.0	41.4	2	41.4	2	41.4				
223(f) <sup>f</sup>	15	333.5	324.5	18	324.5	5,494.9	282	5,494.9	330	6,357.2				
542 Risk Share <sup>gh</sup>	15	100.8	29.7	5	29.7	983.5	79	983.5	89	1,090.6				
Other Rental <sup>i</sup>	0	0.0	0.0	0	0.0	104.7	4	104.7	7	244.8				
Endorsements	36	719.6	505.4	31	505.4	8,362.3	450	8,362.3	516	9,543.5				
221(d)(3) <sup>a</sup> , 223(d) <sup>b</sup> , 241(a) <sup>c</sup>	0	0.0	0.0	0	0.0	22.9	4	22.9	6	27.6				
221(d)(4) <sup>d</sup>	11	353.0	184.7	11	184.7	2,159.6	91	2,159.6	105	2,484.2				
223(a)(7) <sup>e</sup>	0	0.0	31.6	1	31.6	91.8	4	91.8	4	91.8				
223(f) <sup>f</sup>	14	226.0	90.5	10	90.5	5,098.6	289	5,098.6	326	5,755.5				
542 Risk Share <sup>gh</sup>	10	92.3	148.2	8	148.2	884.3	57	884.3	70	1,079.3				
Other Rental <sup>i</sup>	1	48.3	50.3	1	50.3	105.0	5	105.0	5	105.0				

<sup>a</sup> Section 221(d)(3): Insures mortgage loans in order to facilitate the new construction or rehabilitation of multi-family rental, cooperative housing, or single-room occupancy facilities (SROs) for moderate-income households, the elderly, and people with disabilities for up to 100 percent of replacement costs for public, nonprofit, and cooperative mortgages.

<sup>b</sup> Section 223(d): Insures two-year operating loss loans that cover operating losses during the first 2 years after completion (or any other 2-year period within the first 10 years after completion) of multifamily projects with a HUD-insured first mortgage.

<sup>c</sup> 241(a): Insures mortgage loans to finance repairs, additions, and improvements to multifamily rental housing and health care facilities with FHA-insured first mortgages or HUD-held mortgages.

<sup>d</sup> Section 221(d)(4): Insures mortgage loans in order to facilitate the new construction or rehabilitation of multi-family rental, cooperative housing, or single-room occupancy facilities (SROs) for moderate-income households, the elderly, and people with disabilities for up to 90 percent of replacement costs irrespective of the type of mortgage.

<sup>e</sup> Section 223(a)(7): Permits refinancing of an existing loan to reduce interest rate and/or extend amortization period in order to reduce risk of default.

<sup>f</sup> Section 223(f): Insures mortgage loans to facilitate the purchase or refinancing of existing multifamily rental housing. These projects may have been financed originally with conventional or FHA-



insured mortgages. Properties requiring substantial rehabilitation are not eligible for mortgage insurance under this program. HUD permits the completion of non-critical repairs after endorsement for mortgage insurance.

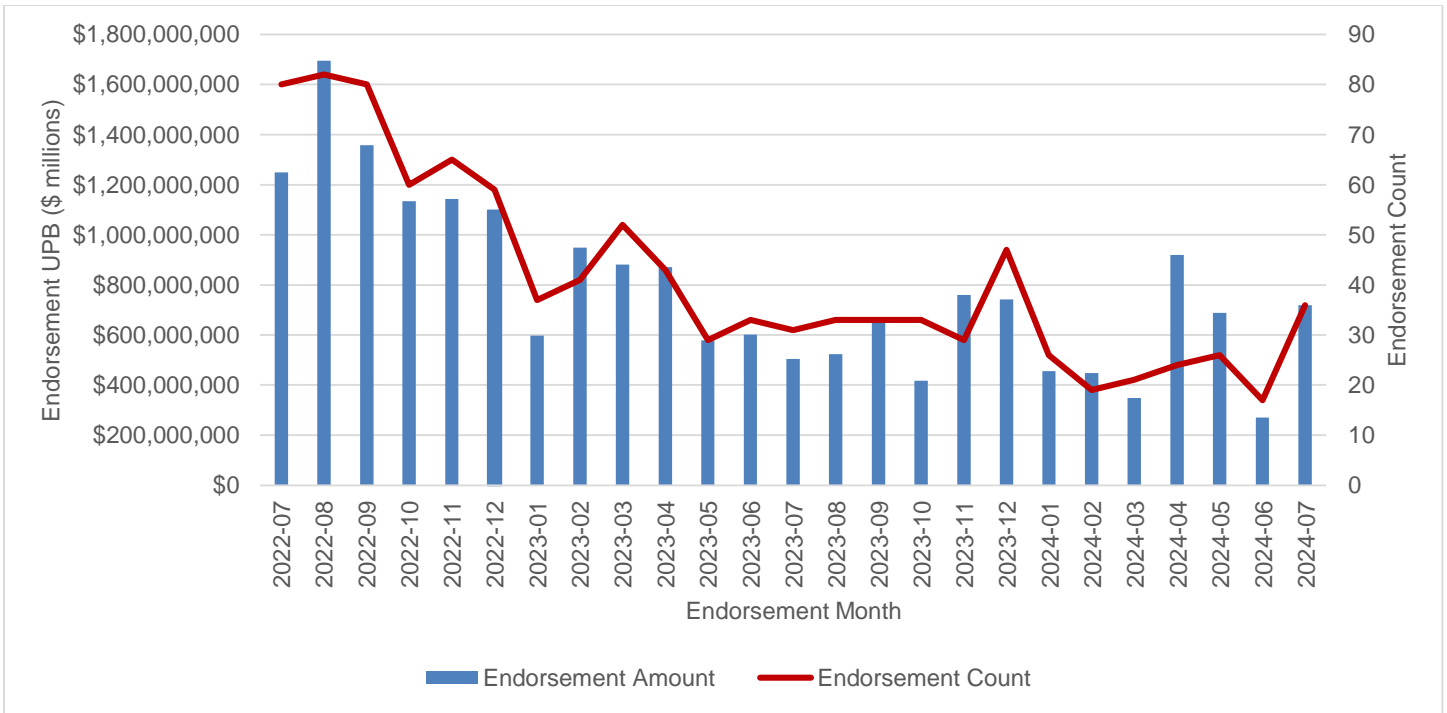
<sup>9</sup> Section 542(b): Authorizes HUD to enter into reinsurance agreements with Fannie Mae, Freddie Mac, qualified financial institutions (QFIs), and the Federal Housing Finance Board. The agreements provide for risk-sharing on a 50-50 basis. Currently, only Fannie Mae and Freddie Mac have active risk-sharing programs with HUD.

<sup>10</sup> Section 542(c): Enables HUD to carry out a program in conjunction with qualified state and local housing finance agencies (HFAs) to provide federal credit enhancement for loans for affordable multifamily housing through a system of risk-sharing agreements. Agreements provide for risk-sharing between 10 percent and 90 percent.

<sup>11</sup> Other Rental: Mortgage loan insurance for Mobile Home Courts (Section 207), Management Cooperative (Section 213), Consumer Cooperative (Section 213(i)), Urban Renewal Housing (Section 220), and Elderly Housing (Section 231).

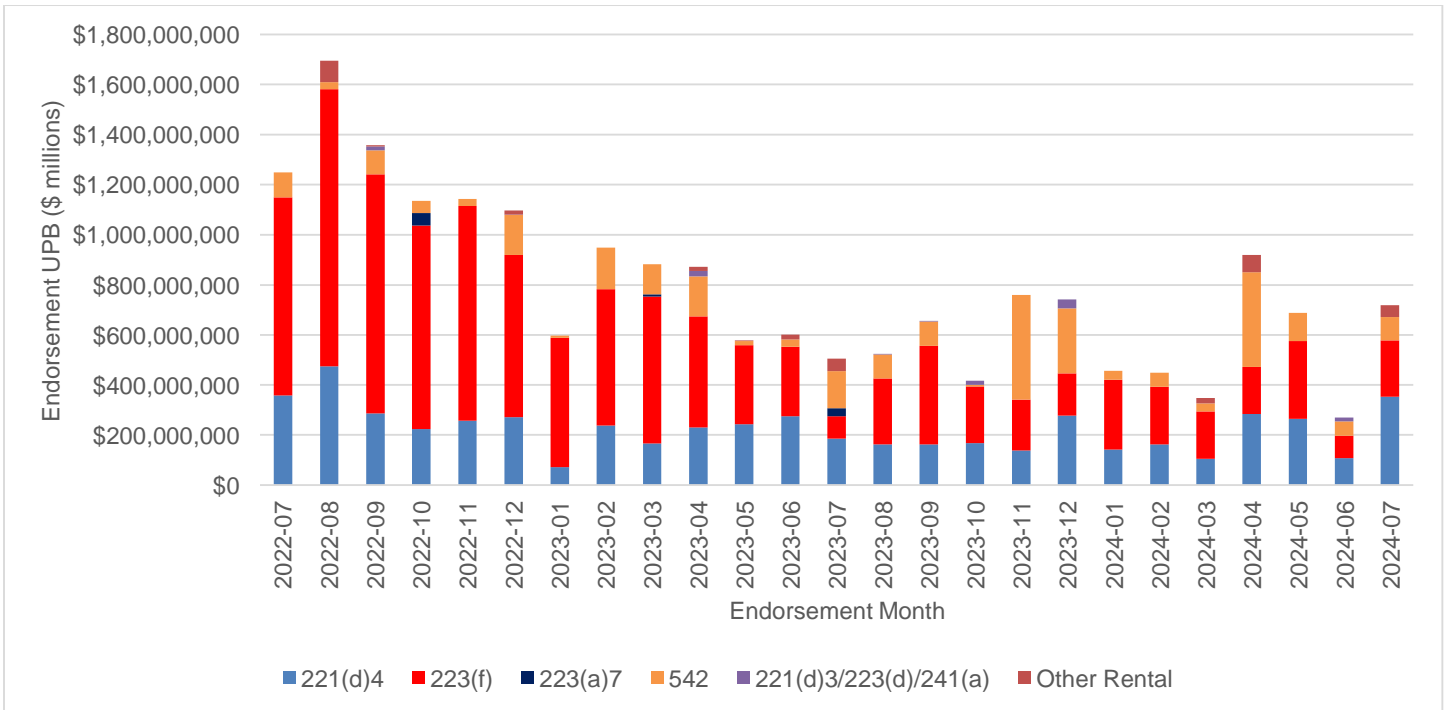
SOURCE: U.S. Department of HUD/FHA, August 2024.

**Figure 2: FHA Multifamily Apartments Endorsement UPB and Count for All Risk Categories, Last 2 Years**



Unpaid Principal Balance (UPB) is the current outstanding principal balance due on the mortgage.  
 SOURCE: U.S. Department of HUD/FHA, August 2024.

**Figure 3: FHA Multifamily Apartments Endorsement Amount by Risk Category, Last 2 Years**



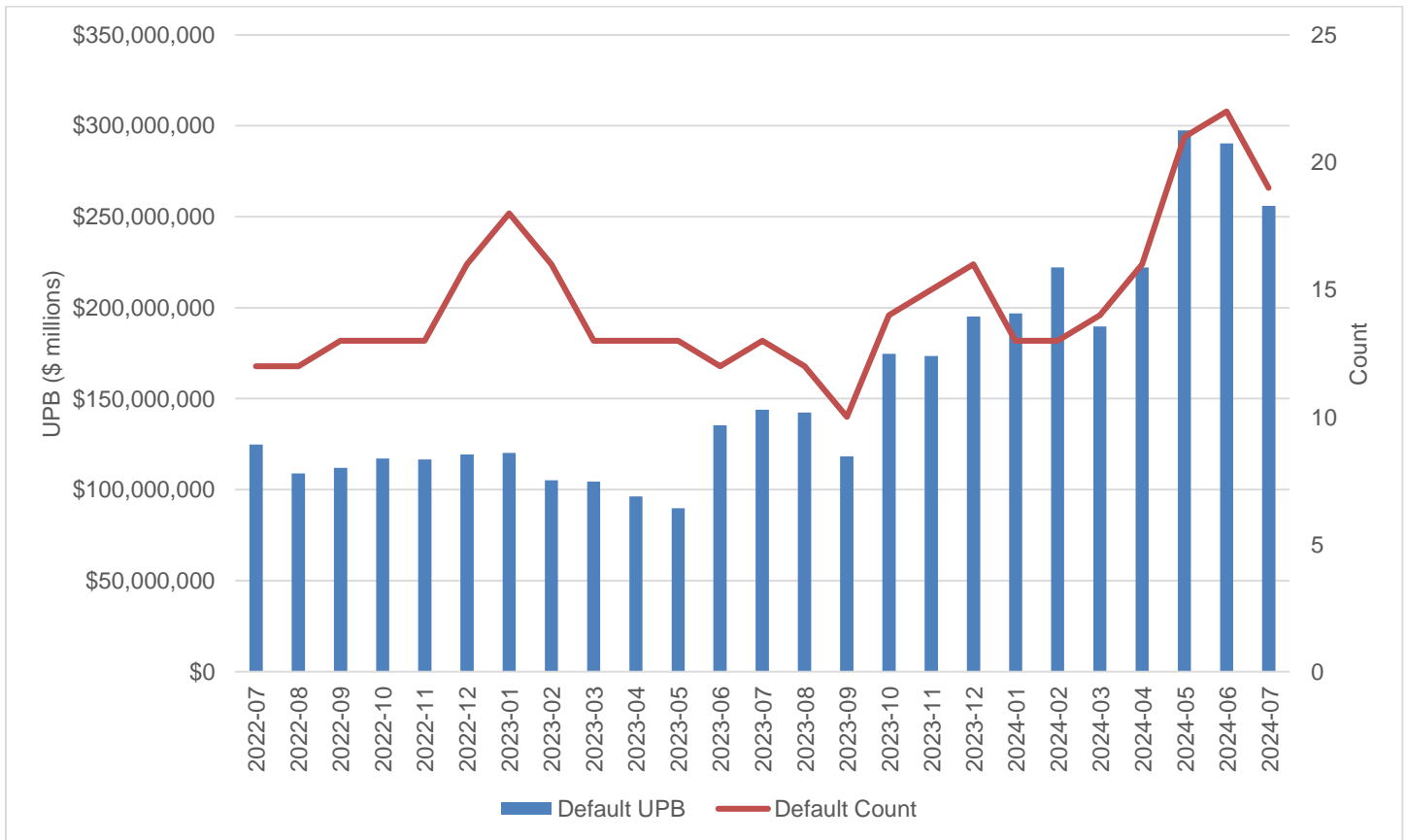
Unpaid Principal Balance (UPB) is the current outstanding principal balance due on the mortgage.  
 Other Rental: Mortgage loan Insurance for Mobile Home Courts (Section 207), Management Cooperative (Section 213), Consumer Cooperative (Section 213(i)), Urban Renewal Housing (Section 220) and Elderly Housing (Section 231).  
 SOURCE: U.S. Department of HUD/FHA, August 2024.

<b>Table 3. FHA Multifamily Apartments 60+ Day Default Rate</b>		
Calendar Year	Month	Default Rate <sup>a</sup> (%)
2021	Jul	0.40
	Aug	0.30
	Sep	0.30
	Oct	0.28
	Nov	0.28
	Dec	0.27
2022	Jan	0.17
	Feb	0.16
	Mar	0.16
	Apr	0.11
	May	0.09
	Jun	0.11
	Jul	0.11
	Aug	0.09
	Sep	0.09
	Oct	0.10
	Nov	0.10
	Dec	0.10
2023	Jan	0.10
	Feb	0.09
	Mar	0.09
	Apr	0.08
	May	0.07
	Jun	0.11
	Jul	0.12
	Aug	0.12
	Sep	0.10
	Oct	0.14
	Nov	0.14
	Dec	0.16
2024	Jan	0.16
	Feb	0.18
	Mar	0.15
	Apr	0.18
	May	0.24
	Jun	0.23
	Jul	0.20

<sup>a</sup> The percentage of the total outstanding balance of FHA-insured multifamily loans that are 60 days or more past due.  
 SOURCE: U.S. Department of HUD/FHA, August 2024.



**Figure 4: FHA Multifamily Apartments Default UPB and Count, Last 2 Years**



Unpaid Principal Balance (UPB) is the current outstanding principal balance due on the mortgage.  
 SOURCE: U.S. Department of HUD/FHA, August 2024.

<b>Table 4. FHA Residential Care Facilities Insured Portfolio, Transitions within Portfolio</b>		
<b>Insured Portfolio</b>	<b>Number of Loans</b>	<b>Loan Balance (\$ millions)</b>
Insurance In-Force (Beginning)	3,674	33,058.5
Terminations	(11)	(38.6)
Claims	0	0.0
Regular Claim	0	0.0
Market to Market	0	0.0
Partial Payment Claim	0	0.0
Maturity	0	0.0
Prepayment	(10)	(34.9)
Refinanced with FHA Loans	(1)	(3.8)
New Endorsements	19	314.9
New Business	0	0.0
223(d) <sup>a</sup>	0	0.0
232 New Construction <sup>b</sup>	0	0.0
241(a) <sup>c</sup>	0	0.0
Refinance	19	314.9
223(d) <sup>a</sup>	0	0.0
232 Refinance <sup>b</sup>	19	314.9
Amortization / Principal Reduction	na	(68.7)
Insurance In-Force (Ending)	3,682	33,266.1
<b>Defaults</b>		.
60+ Days Defaults (Beginning)	162	1,207.1
No longer in Defaults	(24)	(153.6)
Reinstated	(2)	(17.8)
Default to Delinquent	(21)	(128.1)
Terminated Defaults	(1)	(7.7)
Continuing Defaults	138	1,053.4
New 60+ Defaults	8	44.2
Amortization / Principal Reduction	na	(2.3)
60+ Days Defaults (Ending)	146	1,095.3

na = not applicable.

NOTE: Data are for July 1, 2024 – August 1, 2024

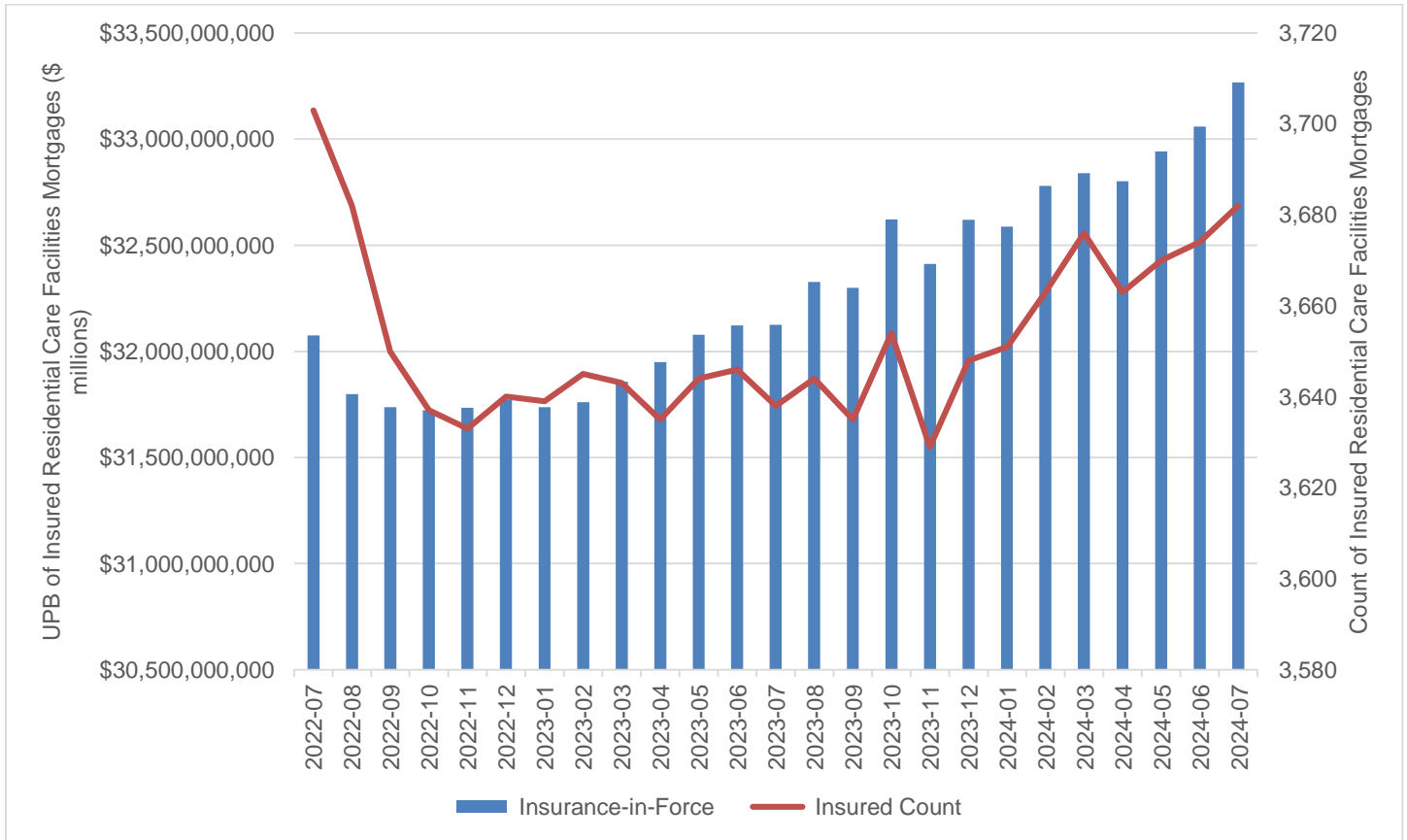
<sup>a</sup> Section 223(d): Insures 2-year operating loss loans that cover operating losses during the first 2 years after completion (or any other 2-year period within the first 10 years after completion) of residential care projects with a HUD-insured first mortgage.

<sup>b</sup> Section 232: Insures loans to finance nursing homes, assisted living facilities, and board and care facilities.

<sup>c</sup> Section 241: Insures loans to finance repairs, additions, and improvements to residential care facilities with FHA-insured first mortgages or HUD-held mortgages.

SOURCE: U.S. Department of HUD/FHA, August 2024.

**Figure 5: FHA Residential Care Facilities Insurance-in-Force and Count, Last 2 Years**



Unpaid Principal Balance (UPB) is the current outstanding principal balance due on the mortgage.  
 SOURCE: U.S. Department of HUD/FHA, August 2024.

**Table 5. FHA Residential Care Facilities Pipeline Summary**

	July 2024			July 2023			FY 2024 to-date			FY 2023 to-date			FY 2023 Final	
	Number Of Loans	Balance (\$) In Million	Loan Balance (\$) In Million	Number Of Loans	Balance (\$) In Million	Loan Balance (\$) In Million	Number Of Loans	Balance (\$) In Million	Loan Balance (\$) In Million	Number Of Loans	Balance (\$) In Million	Loan Balance (\$) In Million	Number Of Loans	Balance (\$) In Million
Applications <sup>a</sup>	38	401.8	753.8	44	753.8	6,644.1	448	6,644.1	276	4,573.5	5,159.4	322	5,159.4	
223(d) <sup>b</sup>	0	0.0	0.0	0	0.0	0.0	0	0.0	0	0.0	0.0	0	0.0	
232 New Construction <sup>c</sup>	0	0.0	0.0	0	0.0	104.7	3	104.7	7	271.8	271.8	7	271.8	
232 Refinance <sup>c</sup>	38	401.8	639.5	42	639.5	6,493.2	440	6,493.2	265	4,173.7	4,759.6	311	4,759.6	
241(a) <sup>d</sup>	0	0.0	114.3	2	114.3	46.2	5	46.2	4	128.1	128.1	4	128.1	
Commitments <sup>e</sup>	16	139.4	130.6	10	130.6	3,153.3	213	3,153.3	139	2,232.4	2,880.5	186	2,880.5	
223(d) <sup>b</sup>	0	0.0	0.0	0	0.0	0.0	0	0.0	0	0.0	0.0	0	0.0	
232 New Construction <sup>c</sup>	0	0.0	0.0	0	0.0	64.7	3	64.7	2	31.8	68.3	3	68.3	
232 Refinance <sup>c</sup>	15	134.6	130.6	10	130.6	3,061.3	207	3,061.3	137	2,200.6	2,812.1	183	2,812.1	
241(a) <sup>d</sup>	1	4.8	27.2	0	0.0	27.2	3	27.2	0	0.0	0.0	0	0.0	
Endorsements <sup>f</sup>	21	299.4	175.1	10	175.1	2,196.5	156	2,196.5	154	2,206.3	2,868.6	196	2,868.6	
223(d) <sup>b</sup>	0	0.0	0.0	0	0.0	0.0	0	0.0	0	0.0	0.0	0	0.0	
232 New Construction <sup>c</sup>	0	0.0	0.0	0	0.0	0.0	0	0.0	1	26.1	26.1	1	26.1	
232 Refinance <sup>c</sup>	21	299.4	175.1	10	175.1	2,183.9	155	2,183.9	153	2,180.2	2,842.5	195	2,842.5	
241(a) <sup>d</sup>	0	0.0	12.6	0	0.0	12.6	1	12.6	0	0.0	0.0	0	0.0	

<sup>a</sup> Application data may differ from data reported on the Office of Residential Care Facilities website due to data in the queue that are not yet assigned when this table is prepared.

<sup>b</sup> Section 223(d): Insures two-year operating loss loans that cover operating losses during the first 2 years after completion (or any other 2-year period within the first 10 years after completion) of residential care projects with a HUD-insured first mortgage.

<sup>c</sup> Section 232: Insures loans to finance nursing homes, assisted living facilities, and board and care facilities.

<sup>d</sup> Section 241: Insures loans to finance repairs, additions, and improvements to residential care facilities with FHA-insured first mortgages or HUD-held mortgages.

<sup>e</sup> Commitment data may differ from data reported on the Office of Residential Care Facilities website due to differences in when the reports are created.

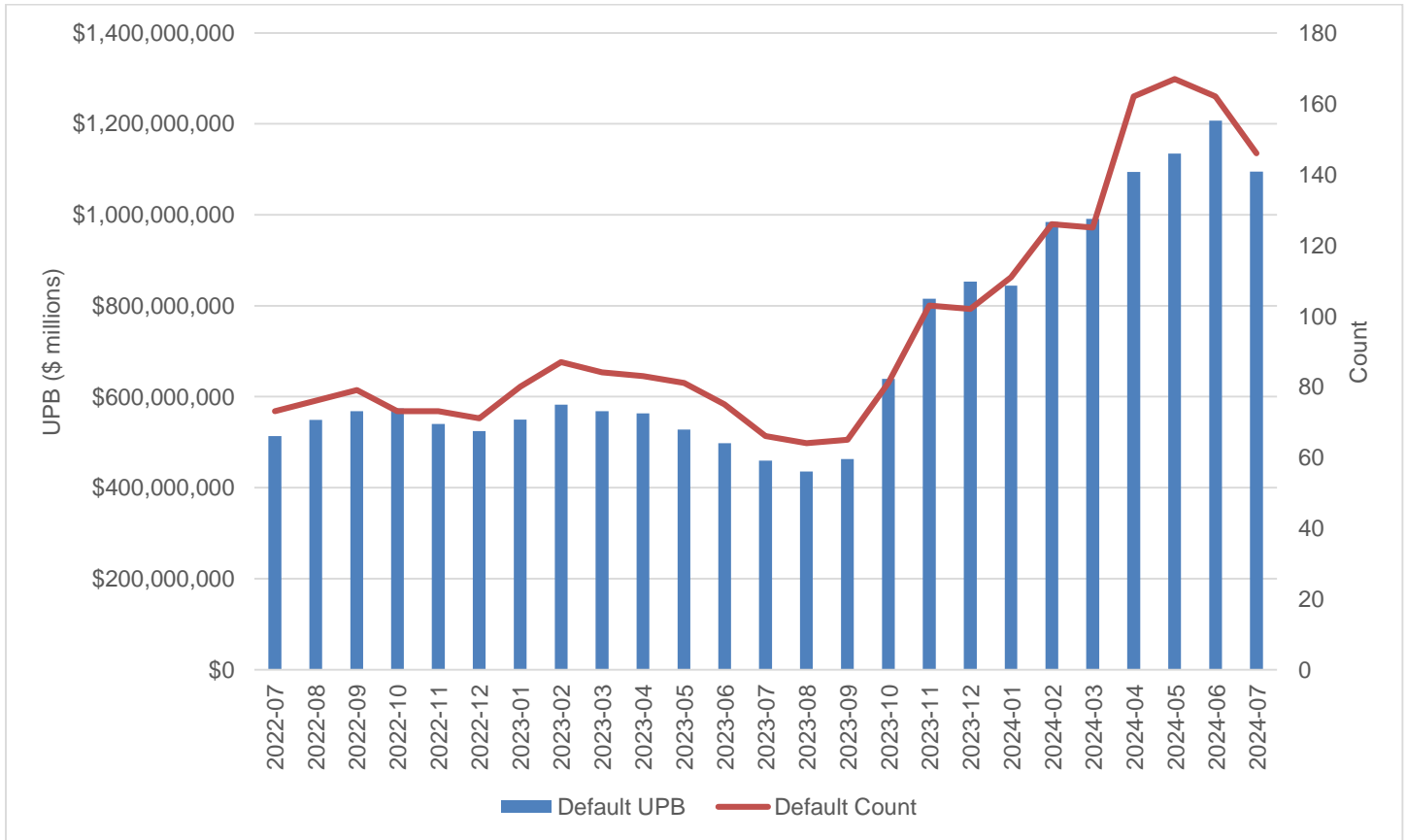
<sup>f</sup> Endorsement data may differ from data reported on the Office of Residential Care Facilities website due to differences in when the reports are created.

SOURCE: U.S. Department of HUD/FHA, August 2024.

<b>Table 6. FHA Residential Care Facilities 60+ Day Default Rate</b>		
Calendar Year	Month	Default Rate <sup>a</sup> (%)
2021	Jul	2.01
	Aug	2.00
	Sep	1.93
	Oct	2.03
	Nov	1.99
	Dec	1.99
2022	Jan	2.02
	Feb	2.02
	Mar	1.97
	Apr	1.88
	May	1.74
	Jun	1.67
	Jul	1.60
	Aug	1.73
	Sep	1.79
	Oct	1.81
	Nov	1.70
	Dec	1.65
2023	Jan	1.73
	Feb	1.83
	Mar	1.78
	Apr	1.76
	May	1.65
	Jun	1.55
	Jul	1.43
	Aug	1.35
	Sep	1.43
	Oct	1.96
	Nov	2.52
	Dec	2.62
2024	Jan	2.59
	Feb	3.00
	Mar	3.02
	Apr	3.34
	May	3.44
	Jun	3.65
	Jul	3.29

<sup>a</sup> The percentage of the total outstanding balance of FHA-insured residential care loans that are 60 days or more past due. SOURCE: U.S. Department of HUD/FHA, August 2024.

**Figure 6: FHA Residential Care Facilities Default UPB and Count, Last 2 Years**



Unpaid Principal Balance (UPB) is the current outstanding principal balance due on the mortgage.  
 SOURCE: U.S. Department of HUD/FHA, August 2024.



<b>Table 7. FHA Hospital Facilities Insured Portfolio, Transitions within Portfolio</b>		
<b>Insured Portfolio</b>	<b>Number of Loans</b>	<b>Loan Balance (\$ millions)</b>
Insurance In-Force (Beginning)	82	5,452.2
Terminations	0	0.0
Claims	0	0.0
Regular Claim	0	0.0
Market to Market	0	0.0
Partial Payment Claim	0	0.0
Maturity	0	0.0
Prepayment	0	0.0
Refinanced with FHA Loans	0	0.0
New Endorsements	0	0.0
New Business	0	0.0
242 Construction - Non Portfolio Hospital	0	0.0
241 Construction or Addition – Portfolio Hospital <sup>b</sup>	0	0.0
223a7 Refinancing –Portfolio Hospital <sup>c</sup>	0	0.0
223f Refinancing or Acquisition – Non Portfolio Hospital <sup>d</sup>	0	0.0
Refinance	0	0.0
223a7 Refinancing –Portfolio Hospital <sup>c</sup>	0	0.0
223f Refinancing or Acquisition – Non Portfolio Hospital <sup>d</sup>	0	0.0
Amortization / Principal Reduction	na	(22.7)
Insurance In-Force (Ending)	82	5,429.5
<b>Defaults</b>		.
60+ Days Defaults (Beginning)	0	0.0
No longer in Defaults	0	0.0
Reinstated	0	0.0
Default to Delinquent	0	0.0
Terminated Defaults	0	0.0
Continuing Defaults	0	0.0
New 60+ Defaults	0	0.0
Amortization / Principal Reduction	na	.
60+ Days Defaults (Ending)	0	0.0

na = not applicable.

NOTE: Data are for July 1, 2024 – August 1, 2024

<sup>a</sup> Section 242: Provides mortgage insurance for acute care hospital facility construction loans.

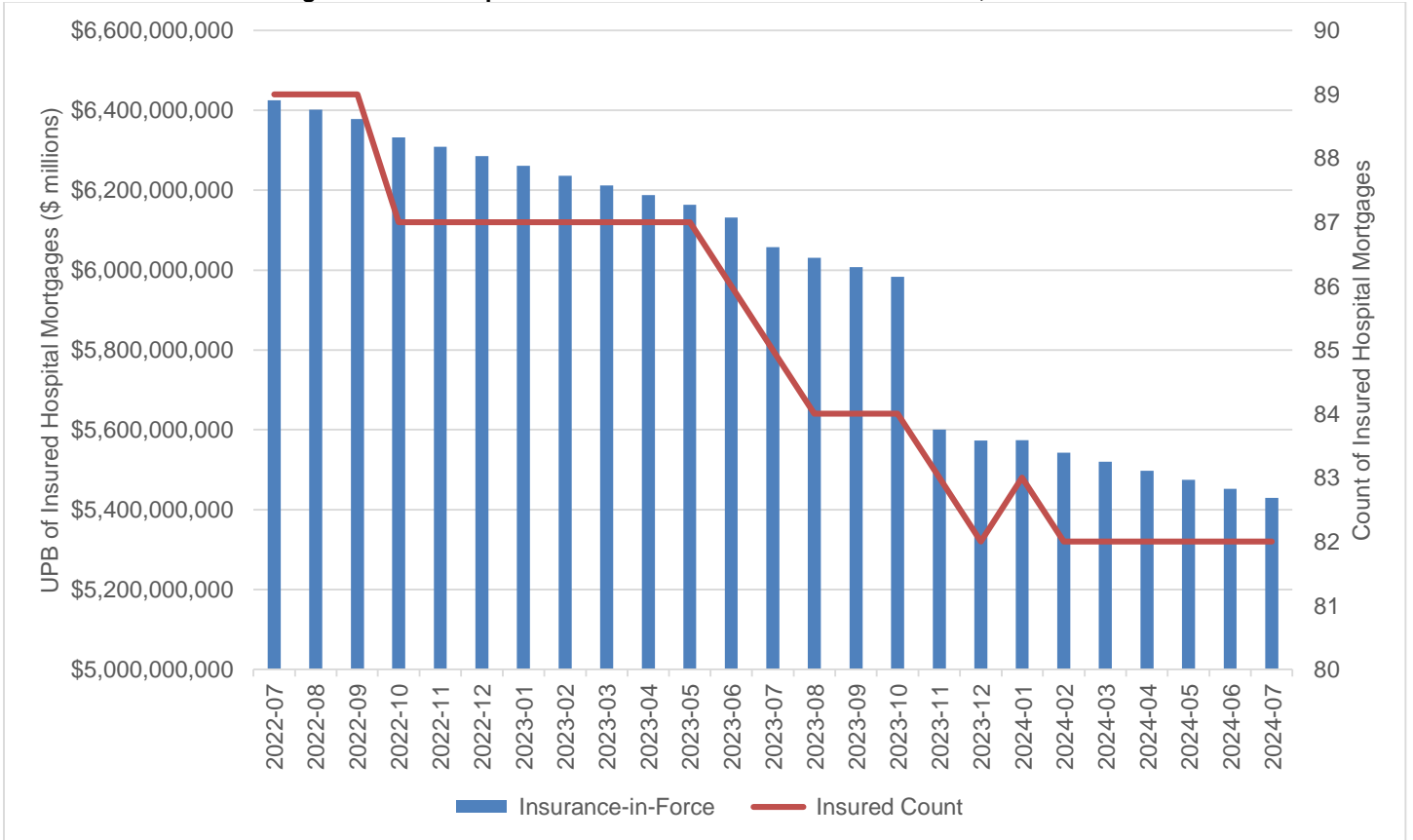
<sup>b</sup> Section 241: Insures mortgage loans to finance repairs, additions, and improvements to hospital facilities with FHA-insured first mortgages or HUD-held mortgages.

<sup>c</sup> Section 223(a)(7): Permits refinancing of an existing loan to reduce interest rate and/or extend amortization period in order to reduce risk of default.

<sup>d</sup> Section 223(f): Insures mortgage loans to facilitate the purchase of a hospital facility or the refinancing of an existing hospital facility loan.

SOURCE: U.S. Department of HUD/FHA, August 2024.

Figure 7: FHA Hospital Facilities Insurance-in-Force and Count, Last 2 Years



Unpaid Principal Balance (UPB) is the current outstanding principal balance due on the mortgage.  
 SOURCE: U.S. Department of HUD/FHA, August 2024.

**Table 8. FHA Hospital Facilities Pipeline Summary**

	July 2024			July 2023			FY 2024 to-date			FY 2023 to-date			FY 2023 Final		
	Number Of Loans	Loan Balance (\$) In Million		Number Of Loans	Loan Balance (\$) In Million		Number Of Loans	Loan Balance (\$) In Million		Number Of Loans	Loan Balance (\$) In Million		Number Of Loans	Loan Balance (\$) In Million	
Applications <sup>a</sup>	0	0.0	0.0	0	0.0	0.0	4	212.1	212.1	2	252.5	252.5	2	252.5	252.5
242 Construction – Non Portfolio Hospital <sup>b</sup>	0	0.0	0.0	0	0.0	0.0	0	0.0	0.0	0	0.0	0.0	0	0.0	0.0
241 Construction or Addition – Portfolio Hospital <sup>c</sup>	0	0.0	0.0	0	0.0	0.0	3	170.0	170.0	2	252.5	252.5	2	252.5	252.5
223a7 Refinancing –Portfolio Hospital <sup>d</sup>	0	0.0	0.0	0	0.0	0.0	0	0.0	0.0	0	0.0	0.0	0	0.0	0.0
223f Refinancing or Acquisition – Non Portfolio Hospital <sup>e</sup>	0	0.0	0.0	0	0.0	0.0	1	42.1	42.1	0	0.0	0.0	0	0.0	0.0
Commitments <sup>f</sup>	0	0.0	0.0	0	0.0	0.0	0	0.0	0.0	0	0.0	0.0	1	23.1	23.1
242 Construction – Non Portfolio Hospital <sup>b</sup>	0	0.0	0.0	0	0.0	0.0	0	0.0	0.0	0	0.0	0.0	0	0.0	0.0
241 Construction or Addition – Portfolio Hospital <sup>c</sup>	0	0.0	0.0	0	0.0	0.0	0	0.0	0.0	0	0.0	0.0	1	23.1	23.1
223a7 Refinancing –Portfolio Hospital <sup>d</sup>	0	0.0	0.0	0	0.0	0.0	0	0.0	0.0	0	0.0	0.0	0	0.0	0.0
223f Refinancing or Acquisition – Non Portfolio Hospital <sup>e</sup>	0	0.0	0.0	0	0.0	0.0	0	0.0	0.0	0	0.0	0.0	0	0.0	0.0
Endorsements <sup>g</sup>	0	0.0	0.0	0	0.0	0.0	1	23.1	23.1	0	0.0	0.0	0	0.0	0.0
242 Construction – Non Portfolio Hospital <sup>b</sup>	0	0.0	0.0	0	0.0	0.0	0	0.0	0.0	0	0.0	0.0	0	0.0	0.0
241 Construction or Addition – Portfolio Hospital <sup>c</sup>	0	0.0	0.0	0	0.0	0.0	1	23.1	23.1	0	0.0	0.0	0	0.0	0.0
223a7 Refinancing –Portfolio Hospital <sup>d</sup>	0	0.0	0.0	0	0.0	0.0	0	0.0	0.0	0	0.0	0.0	0	0.0	0.0
223f Refinancing or Acquisition – Non Portfolio Hospital <sup>e</sup>	0	0.0	0.0	0	0.0	0.0	0	0.0	0.0	0	0.0	0.0	0	0.0	0.0

<sup>a</sup> Application data from previous months may change as data are added to the HUD database after the creation date of this report.

<sup>b</sup> Section 242: Provides mortgage insurance for acute care hospital facility construction loans.

<sup>c</sup> Section 241: Insures mortgage loans to finance repairs, additions, and improvements to hospital facilities with FHA-insured first mortgages or HUD-held mortgages.

<sup>d</sup> Section 223(a)(7): Permits refinancing of an existing loan to reduce interest rate and/or extend amortization period in order to reduce risk of default.

<sup>e</sup> Section 223(f): Insures mortgage loans to facilitate the purchase of a hospital facility or the refinancing of an existing hospital facility loan.

<sup>f</sup> Commitment data from previous months may change as data are added to the HUD database after the creation date of this report.

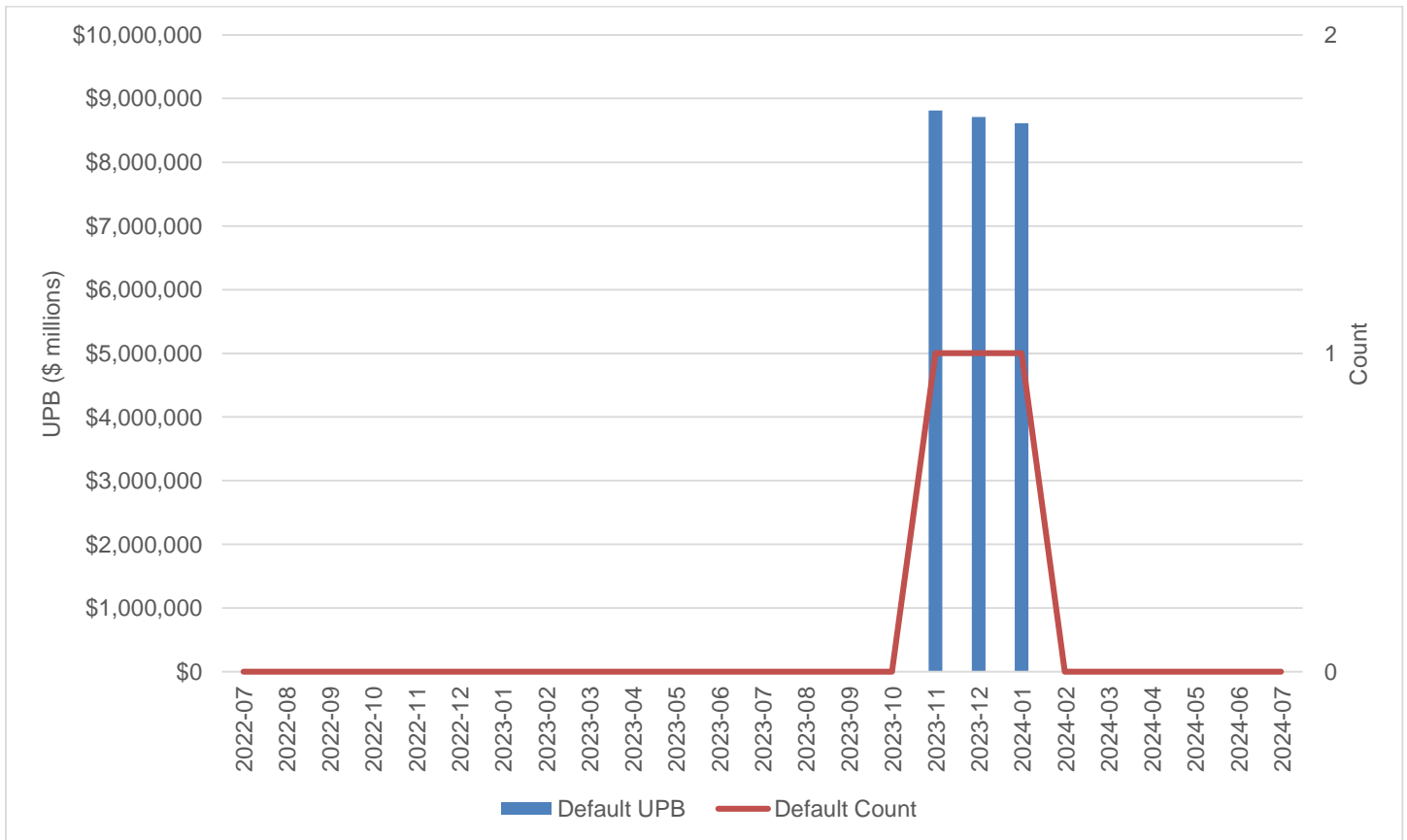
<sup>g</sup> Endorsement data from previous months may change as data are added to the HUD database after the creation date of this report.

SOURCE: U.S. Department of HUD/FHA, August 2024.

<b>Table 9. FHA Hospital Facilities 60+ Day Default Rate</b>		
Calendar Year	Month	Default Rate <sup>a</sup> (%)
2021	Jul	0.00
	Aug	0.00
	Sep	0.00
	Oct	0.00
	Nov	0.00
	Dec	0.00
2022	Jan	0.00
	Feb	0.00
	Mar	0.00
	Apr	0.00
	May	0.00
	Jun	0.00
	Jul	0.00
	Aug	0.00
	Sep	0.00
	Oct	0.00
	Nov	0.00
	Dec	0.00
2023	Jan	0.00
	Feb	0.00
	Mar	0.00
	Apr	0.00
	May	0.00
	Jun	0.00
	Jul	0.00
	Aug	0.00
	Sep	0.00
	Oct	0.00
	Nov	0.16
	Dec	0.16
2024	Jan	0.15
	Feb	0.00
	Mar	0.00
	Apr	0.00
	May	0.00
	Jun	0.00
	Jul	0.00

<sup>a</sup> The percentage of the total outstanding balance of FHA-insured hospital loans that are 60 days or more past due.  
 SOURCE: U.S. Department of HUD/FHA, August 2024.

**Figure 8: FHA Hospital Facilities Default UPB and Count, Last 2 Years**



Unpaid Principal Balance (UPB) is the current outstanding principal balance due on the mortgage.  
 SOURCE: U.S. Department of HUD/FHA, August 2024.